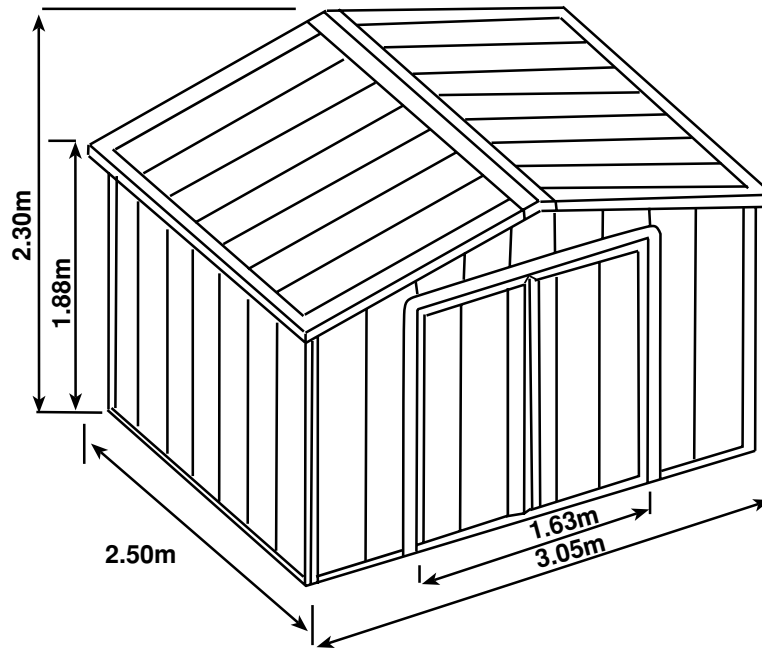


C-8.5 7A2D

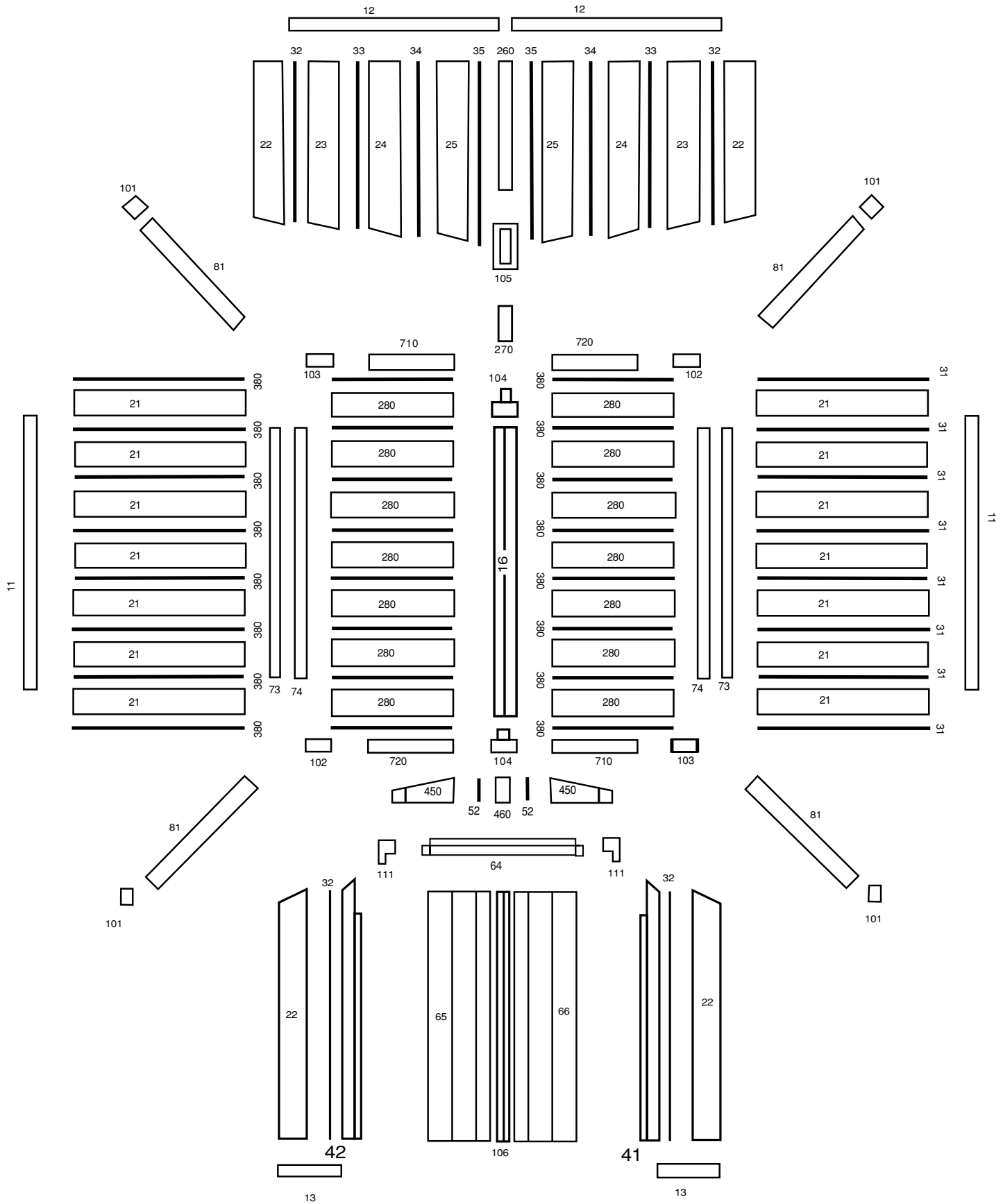
(10'x8' - 3.05mx2.50m)



PARTS LIST	DIMENSIONS (c"m)	PART N°	QTY	PARTS LIST	DIMENSIONS (c"m)	PART N°	QTY
Side Metal Channels	222	11	2	Side Wall Cover Molds	223.5	73	2
Rear Metal Channels	135	12	2	Right Roof Guides	133	710	2
Front Metal Channels	44	13	2	Left Roof Guides	133	720	2
Side Wall Panels	182.5	21	14	Upper Door Frame			
Rear Wall Panels	218	25	2	[Include Metal Beam]	160	64	1
Rear Wall Panels	192.5	22	4	Left Door [160]	183 X 82.7	65	1
Rear Wall Panels	201	23	2	Right Door [160]	183 X 82.7	66	1
Rear Wall Panels	209.5	24	2	Main Roof Beam	222	91	1
Lower Vent Panel [160]	169	260	1	(Includes Metal Beam)			
Upper Vent Panel [160]	20	270	1	Door Stopper	182	106	1
Right Front Wall Panel	182	41	1	Accessories			
(W/Door Frame) [160]				(Small Parts All Boxed):			
Left Front Wall Panel	182	42	1	Corner Molds		101	4
(W/Door Frame) [160]				Left Corner Covers		102	2
Upper Door Short Panels	29.5	450	2	Right Corner Covers		103	2
Upper Door Short Panel [160]	30	460	1	Main Beam Caps		104	2
Roof Panels	152	280	14	Door Frame Corners		111	2
Side Wall Smart Connectors	181.5	31	12	Vent Window		105	1
Rear Wall Smart Connectors	191.5	32	4	Upper Door Smart Connectors	28.5	52	2
Rear Wall Smart Connectors	200	33	2	Accessory Bag Includes:			
Rear Wall Smart Connectors	208.5	34	2	Handles			2
Rear Wall Smart Connectors	217	35	2	Slide Latch			1
Roof Smart Connectors	151	380	16	Screws (includes extras)			1
Corner Posts	182	81	4	"Self Drilling" screws			1
Roof Gutters	222	74	2				

Kit and accessories available

C-8.57A2D



Kit and accessories available